

PROJECT:
 EBENE CYBERCITY MAURITIUS
 LEVEL 3 OFFICE PLAN

DESCRIPTION:
 NSIF Office - Partition Layout

DRAWING NO:
 DRAWING 01 MESS & TRAINING ROOM

NOTE;

1. All gypsum partitions need to fixed from floor finish level to ceiling height 3070mm.
2. All gypsum partitions need to be skimmed 3mm.
3. All plastered surfaces shall be painted.
4. For areas without suspended ceiling having exposed slab and beams, wall finish material shall be from floor level to bottom of slab level (unless noted otherwise).
5. All details are to be coordinated with the structural framing, interior finishes and other related building components in order to provide a complete enclosure finish materials.
6. Contractor to submit shop drawings for Interior Designer's review and approval, showing all details layouts, elevations, section etc. Shop drawings to also indicate all joint thickness alignment and relevant details.

LEGEND

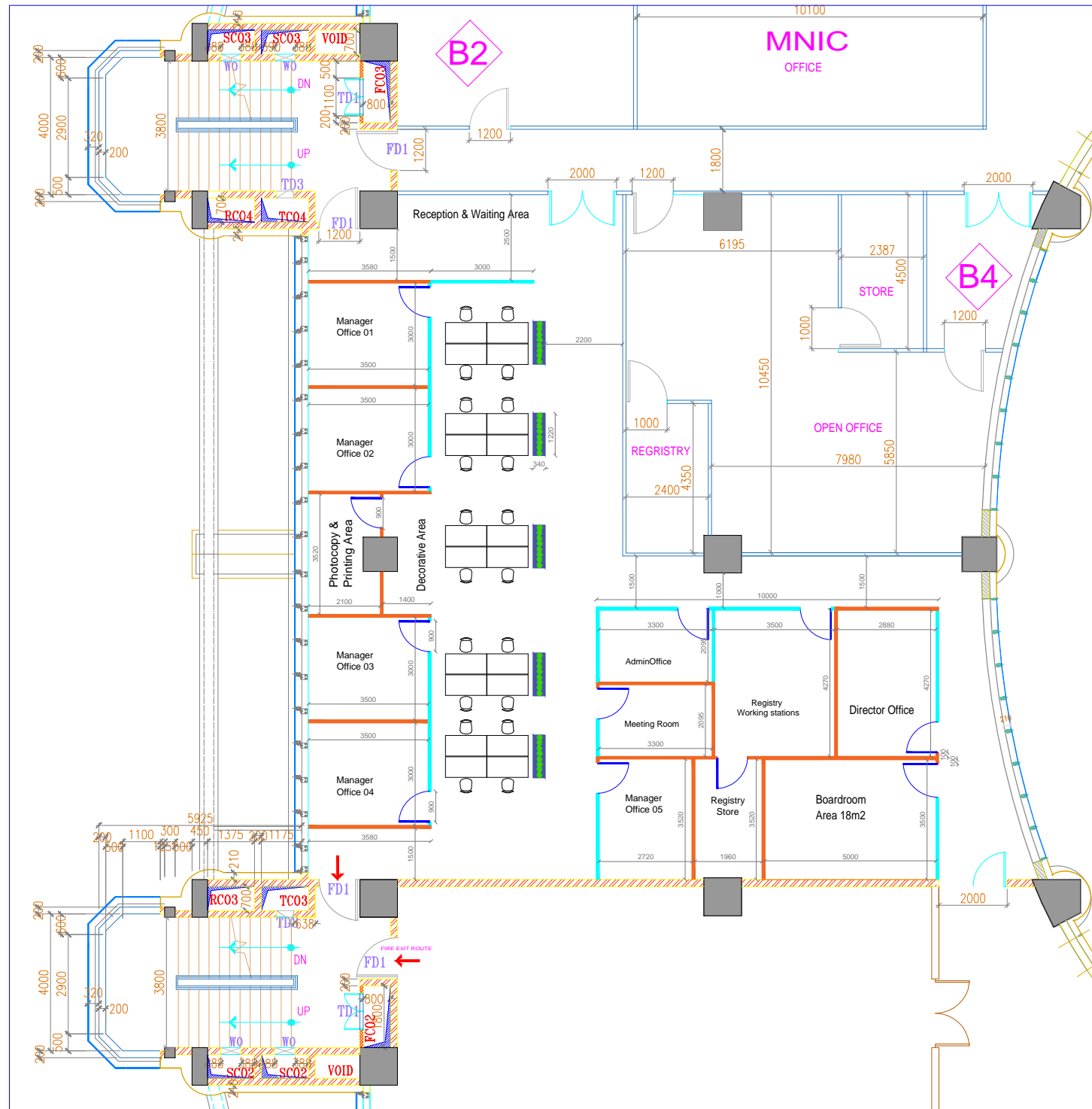
- Full partition gypsum board
- Glass partition

Glass partition: Will be using the existing glass partitions

DATE:
 08/11/2023

LEVEL 3:

SURFACE AREA OF FLOOR
 3557.12 m²
 SURFACE AREA OF ATRIUM
 370.4m²
 SURFACE AREA WORKING
 ON 505.5m²



PROJECT:
EBENE CYBERCITY MAURITIUS
LEVEL 3 OFFICE PLAN

DESCRIPTION:
NSIF Office - Partition Layout

DRAWING NO:
DRAWING 02.1 PROPOSED OFFICE LAYOUT WITH DIMENSIONS

NOTE;

1. All gypsum partitions need to fixed from floor finish level to ceiling height 3070mm.
2. All gypsum partitions need to be skimmed 3mm.
3. All plastered surfaces shall be painted.
4. For areas without suspended ceiling having exposed slab and beams, wall finish material shall be from floor level to bottom of slab level (unless noted otherwise).
5. All details are to be coordinated with the structural framing, interior finishes and other related building components in order to provide a complete enclosure finish materials.
6. Contractor to submit shop drawings for Interior Designer's review and approval, showing all details layouts, elevations, section etc. Shop drawings to also indicate all joint thickness alignment and relevant details.

LEGEND

- Full partition gypsum board
- Glass partition

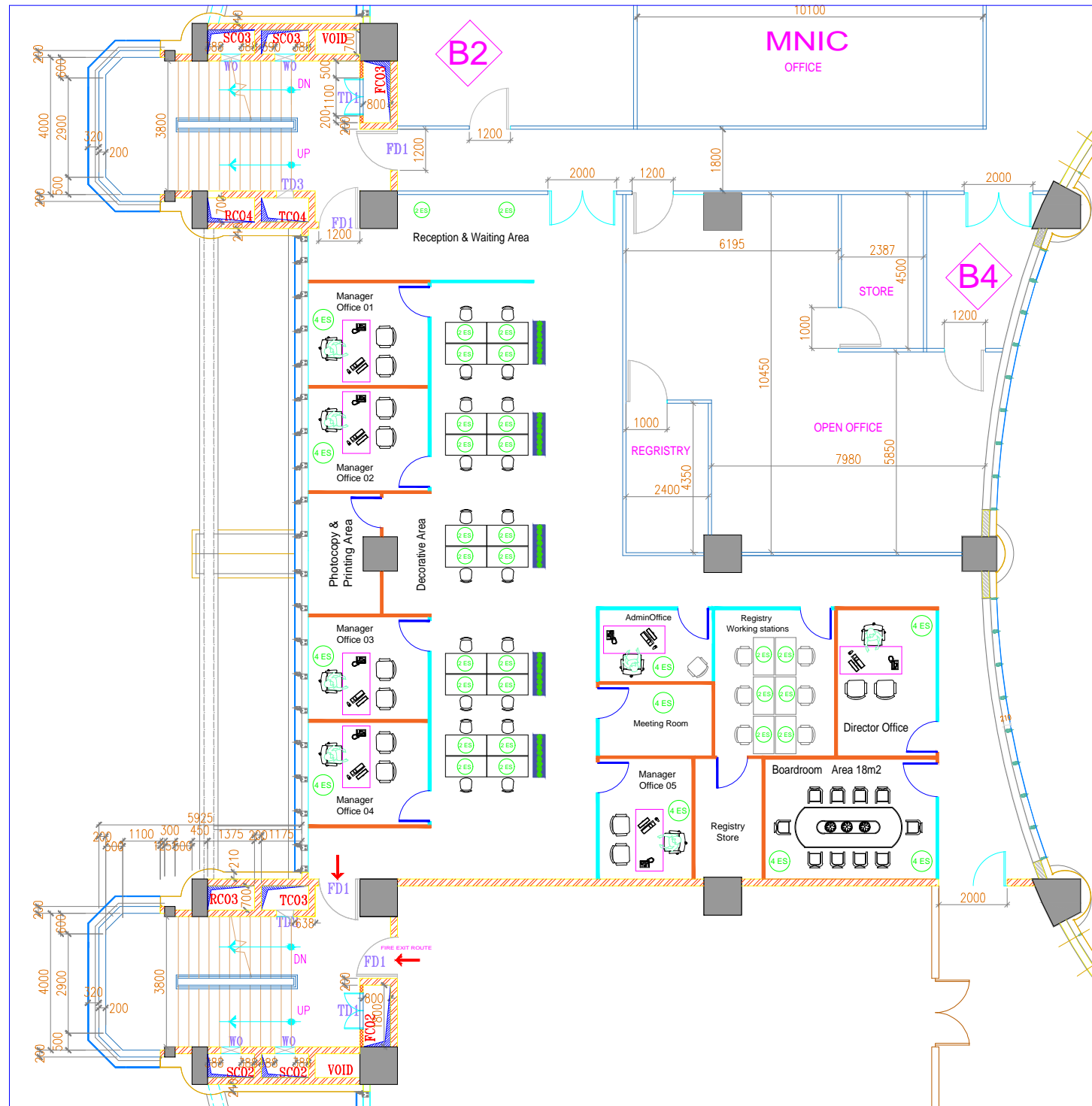
Glass partition: Will be using the existing glass partitions - Check with contractor

NOTE: Open working stations' desks dimensions - 1200mm x 600mm
 Registry working station desks dimensions - 1100mm X 600mm

DATE:
08/11/2023

LEVEL 3:

SURFACE AREA OF FLOOR
 3557.12 m²
 SURFACE AREA OF ATRIUM
 370.4m²
 SURFACE AREA WORKING
 ON 505.5m²



PROJECT:
 EBENE CYBERCITY MAURITIUS
 LEVEL 3 OFFICE PLAN

DESCRIPTION:
 NSIF Office - Electrical Socket Layout

DRAWING NO:
 DRAWING 02.2 ELECTRICAL SOCKET LAYOUT

NOTE;

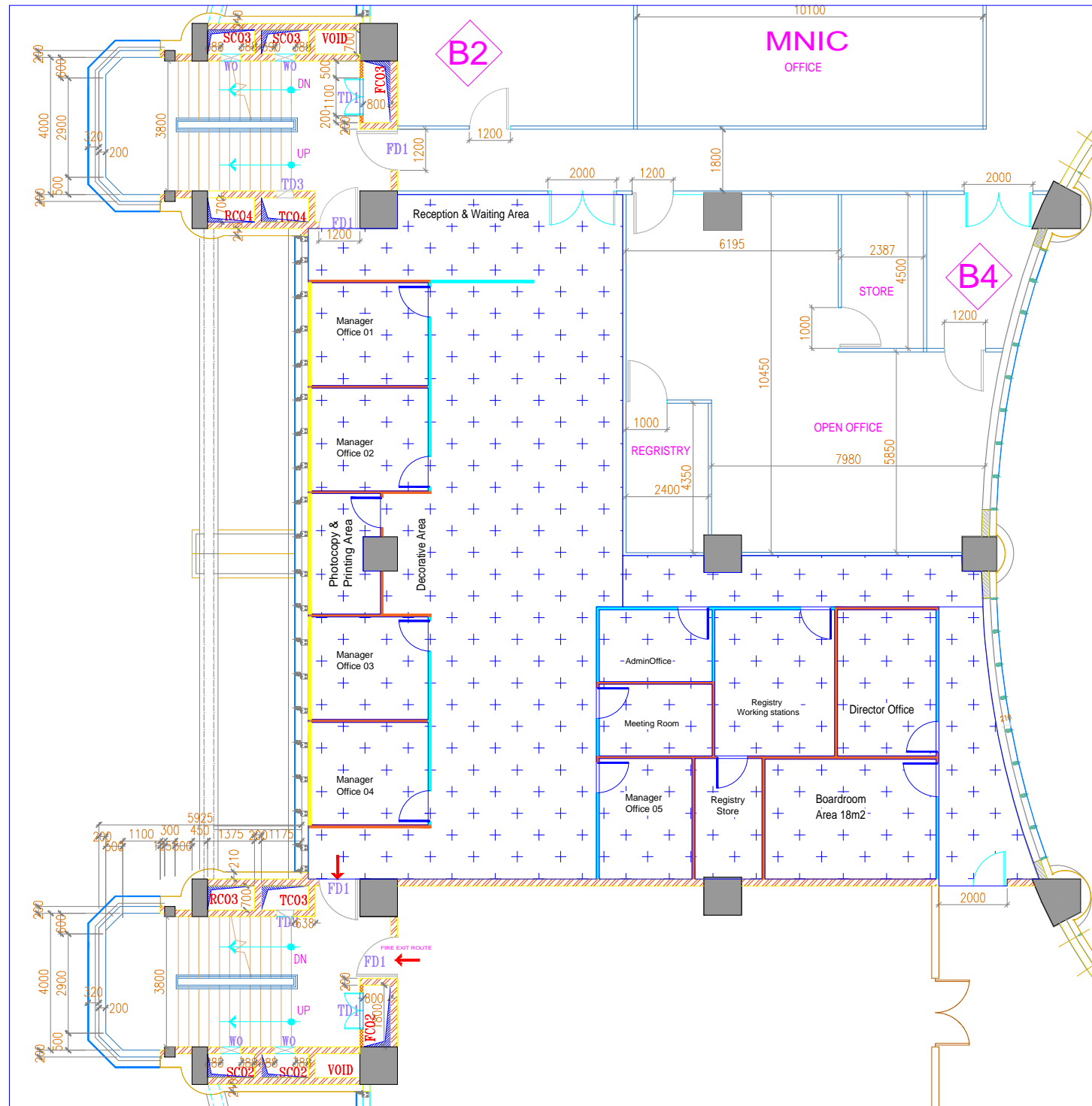
1. All gypsum partitions need to fixed from floor finish level to ceiling height 3070mm.
2. All gypsum partitions need to be skimmed 3mm.
3. All plastered surfaces shall be painted.
4. For areas without suspended ceiling having exposed slab and beams, wall finish material shall be from floor level to bottom of slab level (unless noted otherwise).
5. All details are to be coordinated with the structural framing, interior finishes and other related building components in order to provide a complete enclosure finish materials.
6. Contractor to submit shop drawings for Interior Designer's review and approval, showing all details layouts, elevations, section etc. Shop drawings to also indicate all joint thickness alignment and relevant details.

LEGEND

 **Electrical Socket**

DATE:
 08/11/2023

LEVEL 3:
 SURFACE AREA OF FLOOR
 3557.12 m²
 SURFACE AREA OF ATRIUM
 370.4m²
 SURFACE AREA WORKING
 ON 505.5m²



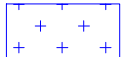

PROJECT:
 EBENE CYBERCITY MAURITIUS
 LEVEL 3 OFFICE PLAN

DESCRIPTION:
 NSIF Office - Flooring Layout

DRAWING NO:
 DRAWING 02.3 FLOORING LAYOUT

NOTE;
 SPC flooring details and blinds would be according to ID specifications

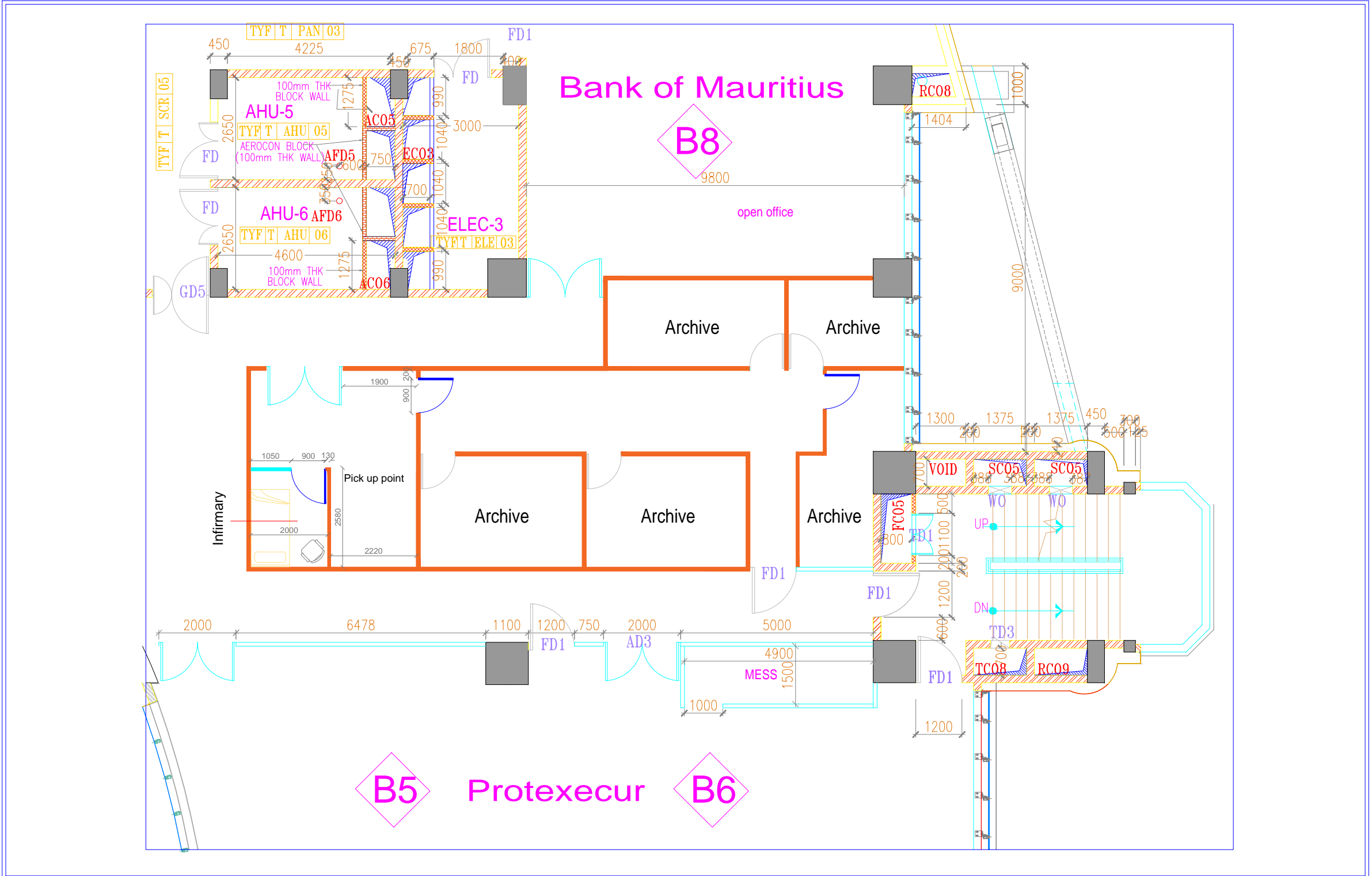
LEGEND

-  SPC Flooring
-  Blinds

NOTE: SPC flooring surface area - 290m²

DATE:
 08/11/2023

LEVEL 3:
 SURFACE AREA OF FLOOR
 3557.12 m²
 SURFACE AREA OF ATRIUM
 370.4m²
 SURFACE AREA WORKING
 ON 505.5m²



PROJECT:
 EBENE CYBERCITY MAURITIUS
 LEVEL 3 OFFICE PLAN

DESCRIPTION:
 NSIF Office - Partition Layout

DRAWING NO:
 DRAWING 03 ARCHIVE & INFIRMARY

NOTE;

- All gypsum partitions need to be fixed from floor finish level to ceiling height 3070mm.
- All gypsum partitions need to be skimmed 3mm.
- All plastered surfaces shall be painted.
- For areas without suspended ceiling having exposed slab and beams, wall finish material shall be from floor level to bottom of slab level (unless noted otherwise).
- All details are to be coordinated with the structural framing, interior finishes and other related building components in order to provide a complete enclosure finish materials.
- Contractor to submit shop drawings for Interior Designer's review and approval, showing all details layouts, elevations, section etc. Shop drawings to also indicate all joint thickness alignment and relevant details.

LEGEND

— Full partition gypsum board

— Glass partition

Glass partition: Will be using the existing glass partitions - Check with contractor

NOTE: Will use existing sockets

DATE:
 08/11/2023

LEVEL 3:

SURFACE AREA OF FLOOR
 3557.12 m²

SURFACE AREA OF ATRIUM
 370.4m²

SURFACE AREA WORKING ON
 505.5m²